



ANTAI

TAI Universal

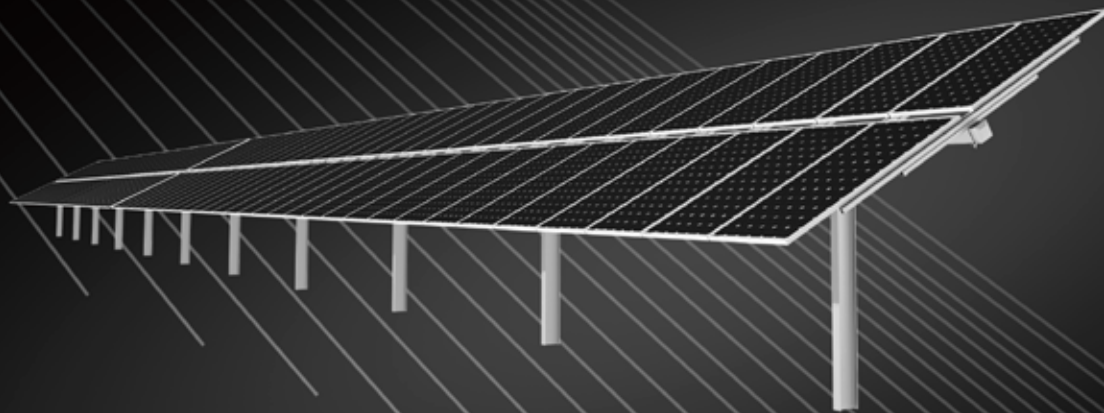
Multiple Slew-Drive Single-Axis
Independent Tracking System—2P



CPP



gamcorp



Design Specification

Tracking Type	Horizontal Single-Axis 2 Modules-in-Portrait Tracker
Drive Type	Synchronous Multi-Point Slew drive
Motor Type	24V DC Motor
String Voltage	1000 V or 1500 V (DC)
Tracker Length	Up to 70m
Tracker Configuration	4 of 1500V Strings
Module Number	90 -120 modules, depending on module size
Ground Coverage Ratio (GCR)	25%-45% (Typical)
Modules Support	All Commercial Modules (210/182/166)
Stow Position	0°
Tracker Rotation Range	±60° (±50° Optional)
Operating Temperature Range	-30 °C to 60°C
Foundation Type	Driven Pile / Concrete / PHC
Materials	Pre-Galvanized/Hot-dipped Galvanized/Magnesium Zinc Coated Steel
Allowable Wind Speed	Up to 55 m/s per ASCE 7-10
Onsite Training	Included
Installation Requirement	No special tools required
Slope Tolerances	North-South 11° (20%)
Warranty	10 year Drive and Control 15 year Structure

Electronics And Controls

Control System	1 controller per tracker
Power Supply	One 1500VDC/1000VDC String Powered, 850/550VAC Inverter Powered, Plant Service Power, Backup lithium battery
Solar Tracking Algorithm	Astronomical Algorithms+Intelligent Algorithms
Controller Energy Consumption	≤0.1 kWh/Day
Tracking Accuracy	±2°
Communications	Zigbee Wireless Mesh Network/ Ethernet or RS485 Cable
Nighttime Stow	Yes
Backtracking	Yes
Certifications	UL 3703 / CE / UL 2703 /IEC 62817

